



# Complete Collection

ULTIMATE THERMAL EFFICIENCY MADE AFFORDABLE



# Newglaze

WINDOWS | DOORS | CONSERVATORIES

ECOglaze 

## TECHNICAL OVERVIEW

### Ultimate Burglar Deterrent

- Up to 6 point locking technology with two locking points per shootbolt and double cam locking centrally
- Our heavy duty shootbolt has up to a 300% greater contact area against competitor shootbolts, thus providing the most secure shootbolt in the UK market



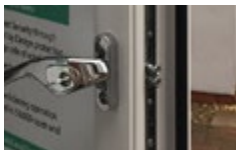
### Dog bolts

- Additional security burglar deterrent



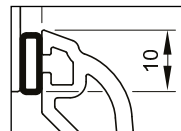
### Secure Locking Point

- Central espag locking with twin cam technology for a stronger and more secure locking point



### Features

- £18 million of investment in energy efficiency, security and system development.
- 10-year guarantee
- State of the art profile
  - with 6 multi chambered system
  - 10mm outer frame coverage



### New "Security+" Shootbolt Corner Keep

- Patented docking system prevents sideways movement of the shootbolt when under attack
- New "fin slots" fit into bead channel of frame to distribute load (when under attack) through the whole frame, rather than solely the keep itself



### Heavy Duty Anti Jemi Bolt and Keep

- Improved Security through Secured By Design
- Improved weather and sound insulation
- Improved closing operation as tested to 50,000 open and closes

### Handles

- Cycle tested to 10,000 x under operational load
- Corrosion resistance to BSEN1690 grade 5

### Glass ECOglaze

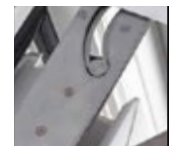
- U-Value of 1.4 W/m<sup>2</sup>K glass as standard
- Low E 90% Argon filled Glass as standard
- A Rated as standard

### Glass ECOglazeplus

- U-Value of 0.9 W/m<sup>2</sup>K glass as standard
- Low E 90% Argon filled Glass as standard
- A+ Rated as standard

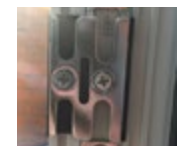
### Superior opening Hinge Tested To 20,000 Cycles

- Superior easy clean hinges to meet fire regulations
- Improved hinge reliability
- High security and excellent compression achieved by unique patented hinge geometry
- Superior carrying weight



### New "Security+" Steel Reinforced Espag Locking Keeps

- Additional steel plates provide additional support either side of the Glass Fibre Nylon (GFN) Hardened Keep





	<b>THE COMPLETE COLLECTION</b>
4-5	Making your home warmer
6-7	What makes our windows and doors energy efficient?
8-11	Making your home more secure
12	A choice of style
13	Subtlety or Statement?
	<b>PVC-U WINDOWS</b>
14	Windows
15	Technical overview
16-17	Choosing the right style
18-19	Hardware
20-21	Window colours
22-23	Window energy efficiency
24	Traditional and Performance
25	Flush Casement Technical Overview
26-27	Flush Casement
28	Planitherm Energy Standard
29	Planitherm Comfort
30	Planitherm Comfort Plus
31	Planitherm
	<b>PVC-U FRONT AND BACK DOORS</b>
32	PVC-U front and back doors
33	Technical overview
34-35	PVC-U door styles
36	Finish, glass and hardware options
37	Obscure glass options
38	Hardware options
39	Colour options
	<b>COMPOSITE DOORS</b>
40	Composite doors
41	Technical overview
42-43	Composite door styles
45	Glass options
46-47	Colour options
48	Kubu Smart door
	<b>SLIDING PATIO, FRENCH &amp; BI-FOLDING DOORS</b>
50	Sliding patio, French & bi-folding doors
51	Technical overview
52-53	Sliding patio doors
54	French doors
55	Technical overview
	<b>ALUMINIUM WINDOWS, DOORS, FRENCH DOORS, SLIDING PATIO AND BI-FOLDING DOORS</b>
58-59	Aluminium bi-fold doors
60-61	ALUK inline sliding patio door
62-63	ALUK entrance and French doors
64-65	ALUK Optio 58BW ST
66-67	ALUK Optio 58BW flush
68-69	ALUK 58BW tilt-before-turn
70	Security
71	Commitment to quality



Proud to be Made in Britain



# MAKING YOUR HOME WARMER

Windows and doors can account for up to 25 per cent of the total energy lost from your home, so your new windows, doors, conservatory or glazed extension need to deliver – not just look great.

All of our ranges are manufactured to the highest standards, meeting and far exceeding all current regulations in the UK for window and door energy efficiency with Window Energy Ratings of up to A+ and U-values as low as 1.0W/m2K.

Whatever your choice of style or finish, it means that your new windows and doors are going to keep your home warm and secure for years to come.

## Your guide to Window Energy Ratings (WERs)

Whether you're thinking about buying new double or triple-glazed windows or doors you need to know how they're going to perform.

Windows and doors can look the same, but deliver wildly different levels of performance.

Window Energy Ratings provide a simple 'traffic light system' measure of performance. This includes a combined measure of how good it is at:

- 1 - Keeping draughts out,
  - 2 - The warmth that it adds to a property through solar-gain,
- and
- 3 - How effective it is at stopping heat loss - something measured in construction as a U-value.

A similar scheme using different calculations also exists for doors (DERs).

28mm Double Glazing

36mm Triple Glazing







Windows and doors can account for up to 25 per cent of the total energy lost from your home





Keep your home warm  
and cosy on even the  
coldest of days

# WHAT MAKES OUR WINDOWS AND DOORS ENERGY EFFICIENT?

## Glass

Glass is the single most important factor in defining the energy performance of your new windows and doors. Our glass supplier, is at the leading edge of innovation. With a proud reputation of being a market leader globally in glass sealed unit manufacturing.

All of the double and triple-glazed glass units that we supply use smart low-e coatings on glass - a one-way door for trapping and holding energy.

We also use warm-edge spacer bars, which separate the sheets of glass in double and triple-glazed units to put 'space' between the cold air outside and warm air inside. This cavity is filled with argon gas. It's completely inert in the environment and you can't see it but because it's denser than air. It creates a highly effective insulating barrier, helping to keep your home warm and cosy on even the coldest of days.

## Windows, doors and glazed extensions

Our PVC-U windows and entrance doors are manufactured in the UK's leading Profile 22 Optima system, with over £18 million of investment from Profile 22 and our manufacturing partner Emplas Window Systems, you can be confident your windows and doors are the most advanced in the market today.

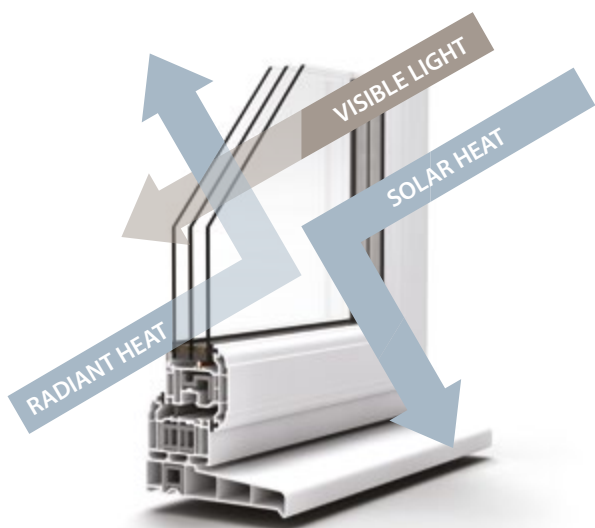
Our frames feature an internal 'honeycomb' multi-chamber system, which create a series of thermal barriers between the warm air inside your home and cold air outside of it (see the window technical overview on page 15).

## PVC-U and composite doors

The same principles are applied in PVC-U panel and composite front and back doors. These use a tough high density polyurethane foam core in the leaf to provide exceptional levels of insulation.

The exact energy efficiency of your new door will depend on a number of different factors including the style of door and glass you choose but all feature our warm core foam technology.

This maximises the thermal efficiency of your new composite door, making it up to almost 20 per cent more energy efficient than a traditional solid timber door.



## Window energy efficiency

1. Low-e coatings on glass create a thermal barrier, preventing heat transfer.
2. Warm-edge spacers used to make up glazing units create space between warm air inside and cold air outside.
3. Gap created by the spacer bar is filled with inert high density gas. Denser than air, it provides an additional barrier to heat transfer.
4. 'Honey-comb' chambers inside PVC-U windows create multiple thermal-breaks.
5. Thermally efficient, recycled composite material reinforcements used in place of energy inefficient steel reinforcements, further improve energy efficiency. (please note full steel may be required in some applications for structural reasons).



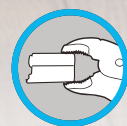
## MAKING YOUR HOME MORE SECURE

Windows and doors are potential 'weak points' in home security so choosing designs with the right combination of security features is important in protecting your home from potential intruders.

All of our windows and doors feature the latest multi-point locking systems and robust hardware, delivering the highest levels of window and door security.

For added peace of mind, we also offer a number of enhanced security options, to upgrade your windows and doors to a level endorsed by the UK Police's, Secured by Design Scheme through our supplier Emplas, for accredited products please see: <https://www.securedbydesign.com/member-companies/sbd-members> and search for Emplas Window Systems Ltd because your security and that of your home and family, matters.

BREAK SECURE



ANTI-BUMP



ANTI-DRILL



ANTI-PICK

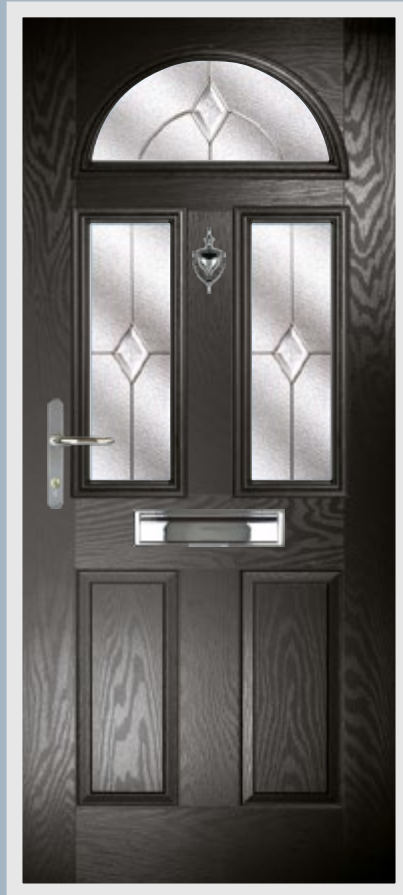




# COMPOSITE DOORS

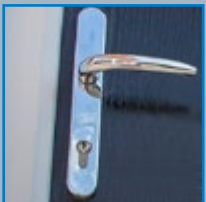
Our front and back door composite door ranges are supplied to the highest security levels and meet Secured by Design standards through our supplier Emplas, for accredited products please see:

<https://www.securedbydesign.com/member-companies/sbd-members> and search for Emplas Window Systems Ltd (when supplied with laminated glass and security letterplate).



Be sure it's secure

Meets and exceeds all current building standards including PAS24



Robust handles manufactured from either stainless steel, zinc or aluminium



Toughened laminated glass energy efficient units provide increased resistance to attack, if selected. All glazing is supplied as Energy PLUS, incorporating 'Low E' glass and Argon filled



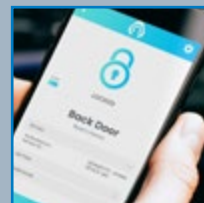
Break secure, anti-bump anti-drill and anti-pick cylinder



High security multi-point locking with inbuilt smart technology as standard



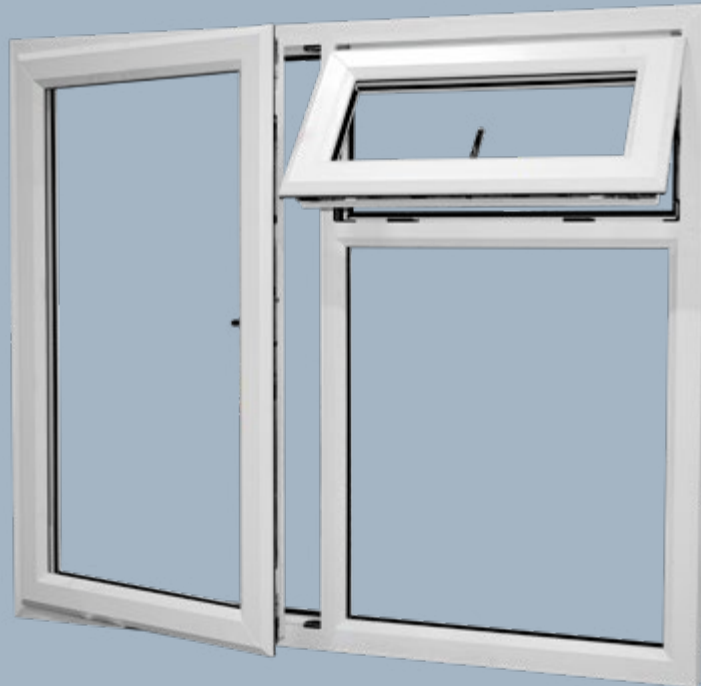
Recycled composite material used for strength, increased security and insulation purposes



Kubu Equipped Doors as standard. Kubu uses smart and simple technology to monitor your lock status in real time

# PVC-U WINDOWS

Our windows feature the latest innovation in attack resistant and robust PVC-U frames and hardware.



Up to 6 point locking technology with two locking points per shootbolt (if selected) and double cam locking centrally



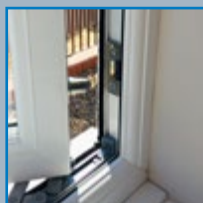
Developed to withstand even the most determined intruder. Tested by an independent test laboratory to over 3,500N force



Patented docking system prevents sideways movement of the shootbolt when under attack (if selected)



Heavy duty bolt has up to 300 per cent greater contact area against competitor shoot-bolts (if selected)



Resistant to salt spray (BSEN1670) and cycle tested over 50,000 times for ultimate long-term performance

Meets and exceeds all current building standards including PAS24 (when dog bolts and laminated glass are selected where appropriate)





# A CHOICE OF STYLE AND FINISH AS INDIVIDUAL AS YOUR PROPERTY

Your choice of window and door design, will help to define the character of your property. From country cottage and period features of traditional box sash windows, to bold statements and contemporary urban designs, all of our windows and doors can be tailored to perfectly complement your very own 'grand design'.

## Window styles

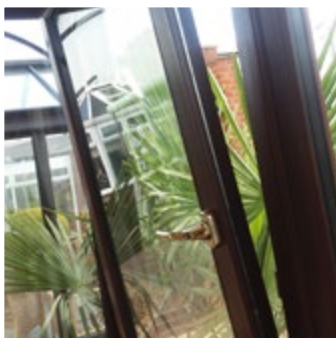
Our windows are manufactured Profile 22's new Optima PVC-U profiles - a classically sculptured (QS), a simpler, chamfered (QC) frame design or 'heritage' flush sash timber replacement. Each offering the highest levels of energy efficiency and slim stylish sightlines. Whatever your choice for your property you can be sure your new windows will be secure, energy efficient and low maintenance.



Casement



Flush Casement



Tilt-and-Turn



Fully Reversible



Vertical Sliding Sash Windows



# SUBTLETY OR STATEMENT?

COLOUR AND FINISH CHOICES THAT ARE RIGHT FOR YOUR HOME

Colour will give shape and definition to your choice of window or door. Our window and door frames are available in an extensive palette of colours and woodgrain finishes that bring huge flexibility to your choice of window or door design.

Our durable foiled finishes are applied as part of the manufacturing process and come with a full 10-year guarantee.

It means that whatever the character of your property, you can choose a low maintenance foiled finish that's right for your home from subtle heritage colours to bold greys, classic woodgrains or sophisticated and understated white.

All colours are a visual representation only.



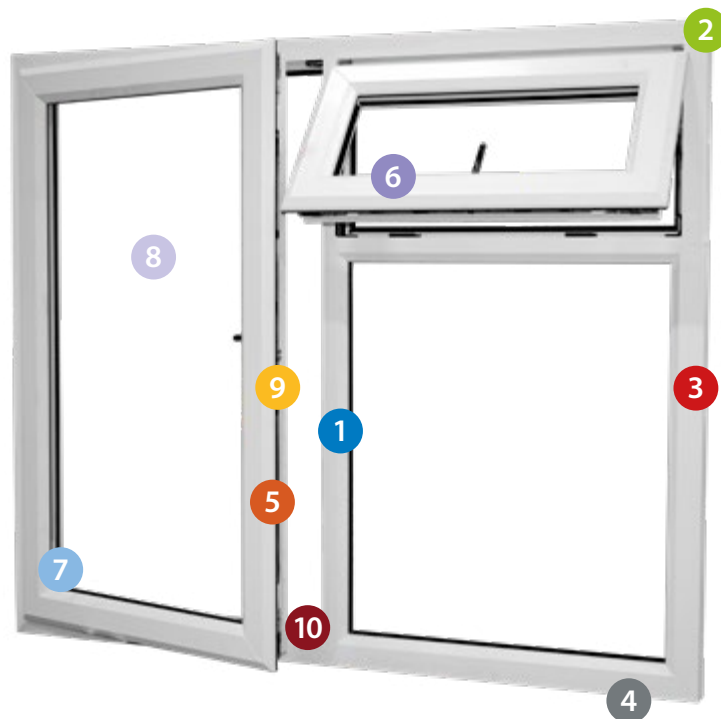
## PVC-U WINDOWS

Good windows start with high performance window systems, robust hardware and the latest innovations in glass technology but it's the vision, which you have for your home, which turns 'good' into 'great'.

We'll guide you through the options to help make that vision a reality. Double or triple-glazed, box sash or casement, foiled or white – our windows can be designed to define or to complement the unique character of your home and just as importantly, your individual aspirations for it.

# WINDOWS – TECHNICAL OVERVIEW

Our window ranges are the product of over £18 million of investment in energy efficiency, security and system development.



Optima™

**MADE IN BRITAIN**®

- 1** Slim sightline window frame featuring sculptured, chamfered and flush framing options plus extensive choice of colour and finish options
- 2** Thermally efficient outer frame featuring six 'honeycomb' chambers and five chamber sash
- 3** Energy efficient recycled composite material or full steel reinforcement options
- 4** Deeper drainage channels carry water away quickly improving weather performance
- 5** 10mm cover on weather seals for ultimate weather tightness
- 6** Specially designed hardware fixing points and local thickening of frame walls to improve screw retention improving security
- 7** High security internal glazing system
- 8** Energy efficient double and triple-glazed glazing options featuring warm-edge spacers and low-e coatings to achieve WERs of up to A+ and U-values as low as 1.0W/m2K
- 9** Up to 6 point locking technology with two locking points per shootbolt and double cam locking centrally. Patented docking system prevents sideways movement of the shootbolt when under attack
- 10** Meets and exceeds all current building standards including PAS24 (PAS 24 requires dogbolts and laminated glass where applicable)



# CHOOSING THE RIGHT STYLE OF WINDOW FOR YOUR HOME

Every home is different, which is why we offer a wide range of window styles and colour options. Making the right choice is about working out not only the best fit to the character of your property but also thinking about how you want to live in it.

Choosing a window style is the starting point. The handles or any colour or finishes you then add, will further define the appearance of not just your windows but your home as a whole. We'll work with you to help you make the perfect choice.

## FRAME DETAILING

Our casement, tilt-and-turn and fully reversible windows are available in a choice of sculptured, chamfered or flush frame systems.



### SCULPTURED DETAIL

Sculptured detailing offers a more traditional decorative finish replicating the curves found on traditional timber windows.



### CHAMFERED DETAIL

Chamfered detailing features a more contemporary and simpler bevelled edge, with straight sightlines.

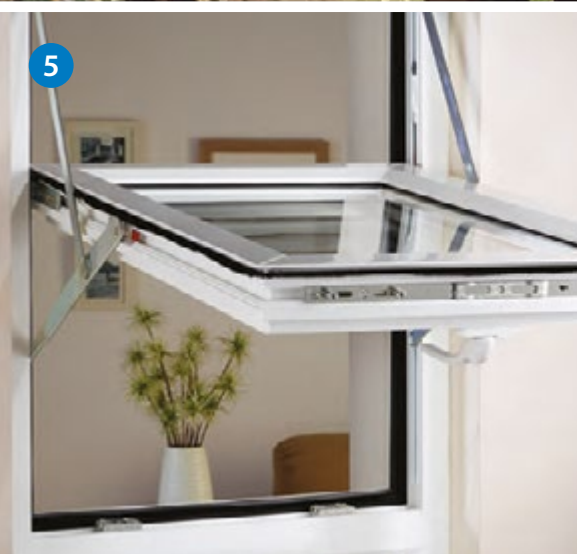
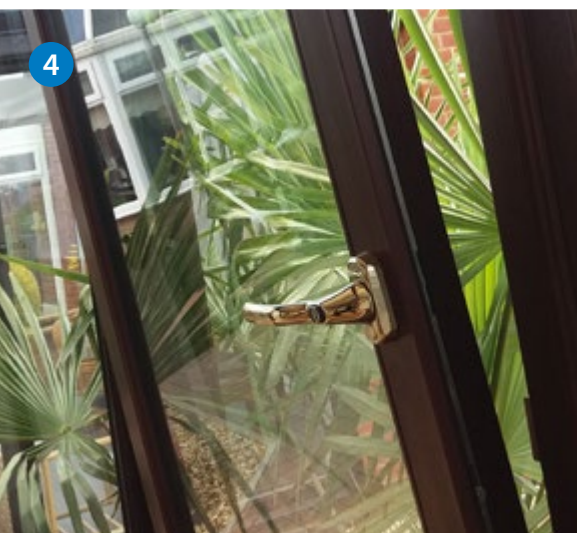
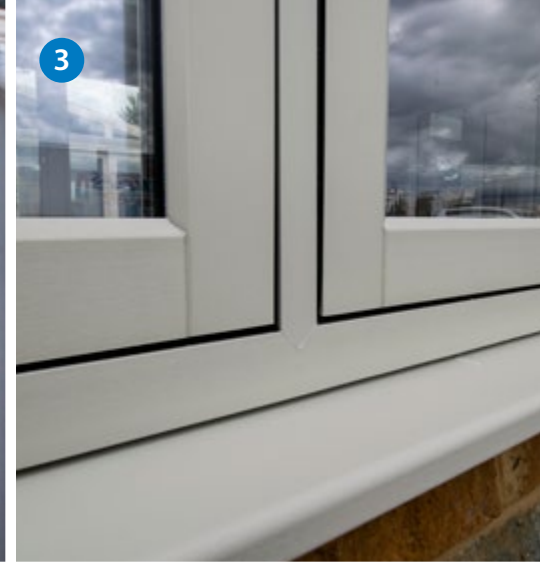


### FLUSH SASH DETAIL

Our flush-frame windows feature a dedicated slim-line window sash which sits flush with the outer frame. This recreates the aesthetic of a period casement timber window in a low maintenance and energy efficient option.

Mechanical joints as shown are available when selected.





#### 1 CLASSIC CASEMENT

Timeless and with classic appeal, our range of beautiful and flexible casement windows can be designed to complement period properties or contemporary homes delivering perfectly balanced sightlines.

#### 2 FRENCH CASEMENT

Featuring the same classic styling, our french casements are designed so that they don't require a central mullion (upright). Opened, it means views are uninterrupted. With no fixed mullion, you can be confident our windows comply with the fire regulations for escape.

#### 3 FLUSH CASEMENT

Outward opening top hung casement windows are a contemporary British design with 90° mechanical-joints on the Optima Flush sash casement, which combines a technically advanced multi-chamber PVC-U system with traditional timber sightlines.

#### 4 TILT-AND-TURN

The ideal solution where external access is an issue, tilt-and-turn windows can be swung into a room for cleaning. Streamlined and contemporary, they're great for wide variety of properties.

#### 5 FULLY REVERSIBLE

Like tilt-and-turn windows, fully-reversible windows are great where access for cleaning can be a problem rotating 180°. This advanced solution is also available in a flush casement finish.

#### 6 VERTICAL SLIDING SASH WINDOWS

The classic choice for Georgian, Victorian and Edwardian properties, our box sash windows bring 21st century innovation and energy efficient to period styling.

#### 7 GEORGIAN ASTRAGAL BARS

Our georgian astragal bar range allows you to bring additional period character your design. Running horizontally or vertically across the glazed units of your casement or sliding sash windows, astragal and georgian bars replicate the appearance of the jointing between panes of glass on a traditional Georgian window.

# WINDOW HARDWARE AND FURNITURE

## High Security Locking and Weather-tightness

The seal formed between the fixed window frame and opening sash is a critical element in door security and weather-tightness.

Our windows feature up to 6 point locking technology with two locking points per shootbolt and double cam locking centrally. As well as locking the window along the sash, our heavy duty multi-point locking system provides a dedicated fix in each corner.

This makes it far harder for intruders to force it open but also improves the weather seal. Our patented docking system also prevents the sideways movement of the locking keep when under attack from intruders.

Independently tested to 3kN\* force - in the PAS24 Security test – it gives you absolute peace of mind that every element of hardware design is optimized to keep intruders out.

\* Our windows withstood a load of 6kN - double the test standard. A copy of this letter confirming the test results can be supplied upon request.



Our range of elegant and ergonomically designed handles bring form to functionality. Designed to fit naturally into the user's hand, they exude quality to the touch.

Beautifully crafted, our Signature™ hardware range is available in premium quality white and black powder coated finishes; chrome plated; and gold and satin electroplate finishes.

**Contemporary**  
sculptured cranked handle  
available in both LH & RH variants

**Push to release**  
locking mechanisms

**Secure**  
key locking

**Attractive**  
flush fitting push button



Chrome

**Colour-coded**  
push button & screw cover cap

**Corrosion resistant**  
tested to BSEN1690 grade 5  
salt and ammonia attack. Ideal  
especially in coastal areas

**Available**  
in five high quality finishes: white,  
black, chrome plated, gold plated,  
and satin plated

**Designed to last**  
cycle tested over 10,000 times  
under operational load



Satin



Gold



White



Black





# WINDOW COLOUR AND WOOD-GRAIN FINISHES

Colour is a powerful design tool.



It can make your windows and doors seamlessly blend into the materials that surround them, delivering a subtle finish, which suggests that they have always been there.

It can drive bold statement designs which exude contemporary sophistication.

Or colour can sit anywhere in between – the choice is yours.

Our extensive colour and finish range from traditional woodgrain options, to contemporary greys and subtle creams and whites brings incredible design flexibility to low maintenance and energy efficient PVC-U windows and doors.

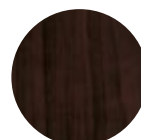
All colours are a visual representation only.



White



Cream



Rosewood



Light Oak



Anthracite Grey



Anthracite Grey Smooth



Black Brown



Pebble Grey



Sage Smooth



Claystone



\*Colours above show our standard colour range available for windows. Additional colours available upon request see page 39





# THE CHOICE IS YOURS

Our extensive colour and finish range from traditional woodgrain options, to contemporary greys and subtle creams and whites brings incredible design flexibility to low maintenance and energy efficient PVC-U windows and doors.





# WINDOW ENERGY EFFICIENCY

Building Regulations may dictate minimum standards but our energy efficient double and triple-glazed windows go far beyond, keeping you warmer and saving you money, year round.

Achieving Window Energy Ratings of up to A+ and U-values as low as 1.0W/m<sup>2</sup>K, our windows are designed to be energy efficient from the inside out.







### ENERGY EFFICIENT FRAMES

Our window frames feature five thermally efficient internal chambers in the sash and six in the outer frame. This thermally efficient ‘honey-comb’ creates a series of barriers between the heat inside your home and cold air outside.

We enhance frame energy efficiency even further whenever possible, by swapping highly conductive steel for far more thermally efficient and ultra-strong recycled composite material reinforcements.

### HIGH PERFORMANCE GLAZING UNITS

All of the double and triple-glazed glass units that we supply, are via our glazing partner. We use smart low-e coatings on our glass - a one-way door for trapping and holding energy.

We also use warm-edge spacer bars which separate the sheets of glass in double and triple-glazed units to put ‘space’ between the cold air outside and warm air inside, insulating it in the process.

You can therefore be assured of advanced thermal efficiency in a beautifully crafted and low maintenance window.

Triple Glazing



Double Glazing



#### TYPICAL WERS

Achieves A with double glazing\*  
A+ achievable with triple glazing\*\*

\*A on Flush casement with 24mm double glazing, 4/16/4 clear/Total+

\*\* Except Flush Casement Window and Vertical Sliding Sash. Standard 36mm triple achieves A+

#### TYPICAL U-VALUES

Achieves 1.3 W/m<sup>2</sup>K with double glazing\*  
Achieves as low 1.0 W/m<sup>2</sup>K with triple glazing\*\*

\* 1.3 W/m<sup>2</sup>K on flush casement window

\*\* Triple Glazing not available on Flush Casement Window or Vertical Sliding Sash Window.

# TRADITION AND PERFORMANCE

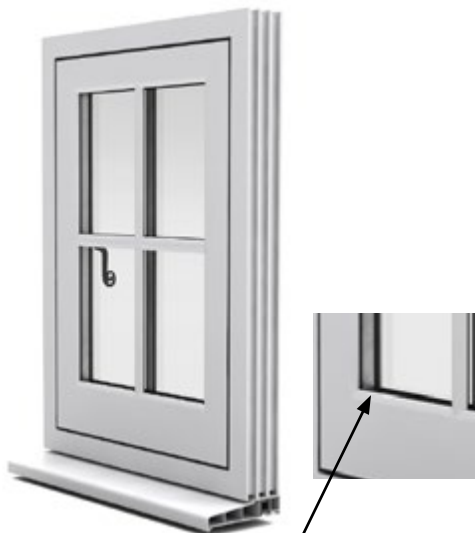
If PVC-U had been available to builders in the past, they would have used it. No one disputes the beauty of timber, but it has drawbacks. In the wet, it can swell. In dry conditions, it can shrink. It can warp or twist and whatever else you do, you'll always have to find the time to take good care of it. Imagine never having to paint a window. Imagine never having a window already welded shut with layers of paint.

PVC-U windows are tough, durable and insulating. They need hardly any maintenance. They open easily and when they're closed, they are secure. Our Optima Flush windows replicate the appearance of traditional wooden frames: the delicate curves, detailing and trims, even the colours, grain and texture, but there's more on offer than good looks. Multi-chambered frames are secure and strong, advanced seals block the weather, high-specification glazing provides thermal and acoustic insulation. We don't believe in 'either/or' – we know you can have traditional style and 21st century performance.

## Lines and proportions

*We've thought of it all: the right-sized frame with the right-sized window, and transoms, mullions and dummy sashes that create the authentic appearance and lines of a traditional flush casement. The shape is chamfered on the outside to shed the rain, and for indoors we incorporate a sculptured bead for that classical feel.*

Deep Bottom Rail



Chamfered style externally



Sculptured Bead internally



# FLUSH CASEMENT TECHNICAL OVERVIEW



Optima™

 **MADE IN  
BRITAIN**®

- 1** Slim sightline window frame, with extensive choice of colour and finish options
- 2** Thermally efficient outer frame featuring six 'honeycomb' chambers and five chamber sash
- 3** Energy efficient recycled composite material or full steel reinforcement options
- 4** Deeper drainage channels carry water away quickly improving weather performance
- 5** Specially designed hardware fixing points and local thickening of frame walls to improve screw retention improving security
- 6** High security internal glazing system
- 7** Energy efficient double glazed options featuring warm-edge spacers and low-e coatings
- 8** Up to 6 point locking technology with two locking points per shootbolt and double cam locking centrally. Patented docking system prevents sideways movement of the shootbolt when under attack
- 9** Meets and exceeds all current building standards including PAS24







## CONSERVING & ADVANCING

Our PVC-U Flush Casement windows are virtually indistinguishable from timber but have two major advantages. Firstly, they are more affordable and can make a huge improvement to the comfort and appearance of a property where timber alternatives may be prohibitively expensive.

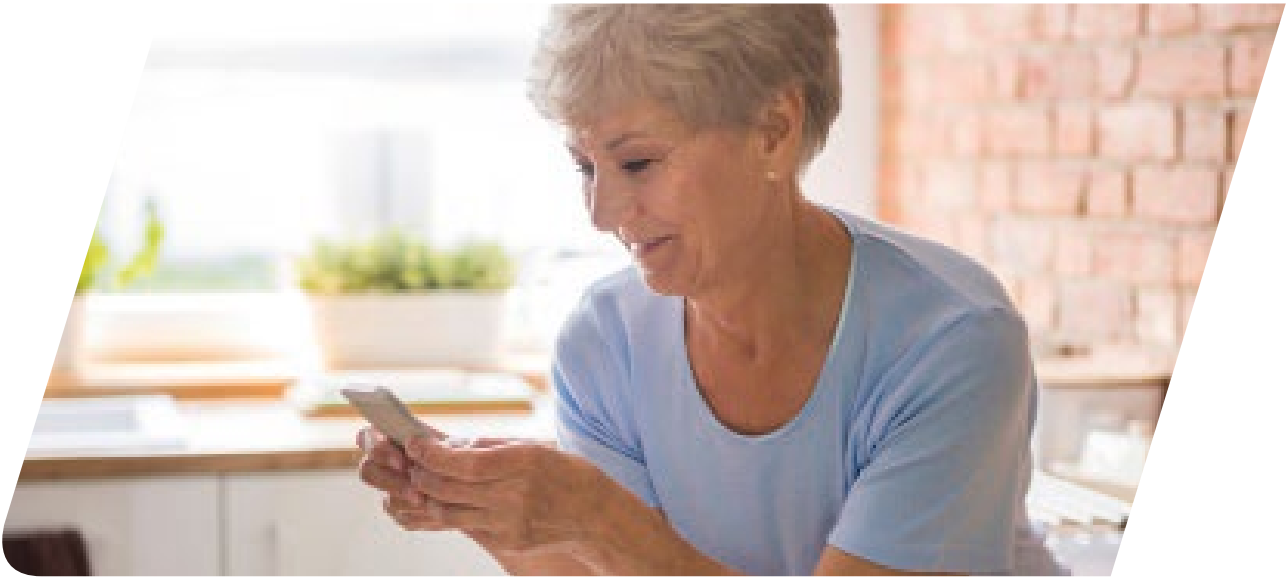
Secondly, their insulating qualities, easy maintenance and recyclability make them an environmentally-friendly alternative.

Our sightlines are spot on. Our Flush Casements have perfectly balanced dummy sashes and there is a deep bottom rail available. There is a great selection of period colours and wood-effect finishes, including a timber-grained, white or cream painted effect, which avoids potential unease about the smooth surface of PVC-U.



Optima™  
BY PROFILE 22 SYSTEMS





# Energy Standard



## KEEP YOUR HOME WARM AND COMFORTABLE

Keeping your home warm can be challenging when energy prices are rising. Choosing windows with Planitherm Energy Standard glass can help to combat this.

The special coating on our glass captures the warmth from natural daylight, and stops 56%\* more internal heat escaping than older-style double glazing. So, it will cost you less to keep your home warm.

### HOW IT WORKS

The crystal clear, microscopic coating applied to the inner pane of glass allows more light and heat into the room, helping to warm it, while keeping more heat in too.

### BENEFITS

- Improved energy efficiency
- Can help lower energy bills

### WHERE TO USE IT

Ideal for standard windows in any room, but not ideal for south- or west-facing rooms with sunny aspects or large glazed areas.

Outer pane	4mm PLANICLEAR
Inner pane	4mm PLANITHERM TOTAL+
Cavity	20mm   Argon gas filled   Warm edge spacer

\*Compared with a 4mm/16mm cavity/4mm (uncoated) Double Glazed Unit filled with air. \*\*Calculated from UV transmittance in accordance with EN 410.





# Comfort



## Choose better security and better sleep

Disturbed by outside noise? Concerned about security? Choosing windows with Planitherm Comfort can help provide the answer.

With a built-in transparent layer, Comfort glass is much tougher to break through than standard, unlaminated glass. Ideal for bedrooms or street-facing rooms, the layer also reduces noise by 23%\*, helping to improve your overall well-being. As an added bonus, it also blocks 99%\*\* of UV rays, helping your furnishings to look as good as new for longer.

### HOW IT WORKS

The transparent layer laminated between two panes of glass creates a strong barrier, dampens noise and blocks over 99%\*\* of UV light.

### BENEFITS

- Helps protect against burglary and vandalism – designed to meet the official police security initiative ‘Secured by Design’ standard
- Reduces unwanted noise
- Improved energy efficiency
- Reduces fading of your furniture

### WHERE TO USE IT

Ideal for standard windows in any room, particularly bedrooms for a peaceful night’s sleep, or those overlooking busier streets where noise and/or security are a concern.

Outer pane	6.8mm STADIP SILENCE (6.8mm Acoustic Laminated Glass)
Inner pane	4mm PLANITHERM TOTAL+
Cavity	18mm   Argon gas filled   Warm edge spacer

\*Compared with a 4mm/16mm cavity/4mm (uncoated) Double Glazed Unit filled with air. \*\*Calculated from UV transmittance in accordance with EN 410.



# Comfort Plus



ENERGY EFFICIENCY



ENHANCED SECURITY



NOISE REDUCTION



FURNITURE FADE PROTECTION



REDUCE OVERHEATING



## MAKE YOUR HOME INTO THE ULTIMATE SANCTUARY

For the perfect balance of light, warmth and comfort choose Planitherm Comfort Plus.

An invisible coating is specifically designed to block out 50% of external heat from the sun while keeping in 59%\* more internal heat. Your home will be cooler in summer and warmer in winter.

Particularly useful for large glazed areas, such as bi-fold or patio doors, and for south- and west- facing rooms with sunny aspects. The glass is also combined with a built-in transparent layer to give you all the comfort features of the Comfort option.

### HOW IT WORKS

The special clear coating on the glass reflects away heat from the sun, while optimising heat retention in the room. The transparent, laminated layer creates a strong barrier, dampens noise and blocks 99%\*\* of UV light.

### BENEFITS

- Blocks out heat from the sun's rays, giving you greater control of your internal temperature
- Improved energy efficiency
- Helps protect against burglary and vandalism – designed to meet the official police security initiative ‘Secured by Design’ standard
- Reduces fading of your furniture
- Reduces unwanted noise





### WHERE TO USE IT

Ideal for homes with large glazed areas, bi-fold doors and south- and west-facing aspects. Excellent choice for both new builds and renovations.

Outer pane	6.8mm STADIP SILENCE (6.8mm Acoustic Laminated Glass)
Inner pane	4mm PLANITHERM ONE T
Cavity	18mm   Argon gas filled   Warm edge spacer

\*Compared with a 4mm/16mm cavity/4mm (uncoated) Double Glazed Unit filled with air. \*\*Calculated from UV transmittance in accordance with EN 410.



Comfort Feature	Energy Standard	Comfort	Comfort Plus
 Energy Efficiency	✓	✓	✓
 Enhanced Security		✓	✓
 Noise Reduction		✓	✓
 Furniture Fade Protection		✓	✓
 Reduce Overheating			✓



**Energy Efficiency**

With Planitherm, energy efficiency comes as standard.

A special coating on our glass helps stop heat escaping, so you'll use less energy to keep your home warm. Our Energy Standard and Comfort glazing captures and makes use of the warmth from natural daylight, while Comfort Plus helps limit and control it – ideal for very sunny rooms.



**Enhanced Security**

Help protect your family from break-ins and vandalism.

Our high-security transparent layer on Comfort and Comfort Plus glass makes them much tougher to break through than standard, unlaminated glass. When used in an approved window frame, they're designed to meet the official police security initiative 'Secured by Design' standard\*, so you'll feel safer and more secure in your home.



**Noise Reduction**

Make your home a peaceful respite from the world outside.

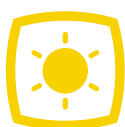
Perfect for bedrooms to ensure a good night's sleep, a built-in acoustic layer keeps exterior noise exactly where it belongs – outside. If you live on a busy road or close to other disturbing sounds, noise control glazing should be on your list.



**Furniture Fade Protection**

Keep your furniture looking newer for longer.

Prolonged exposure to ultra-violet light from the sun will contribute to your furniture and curtains fading over time. Our hidden layer of protection on Comfort and Comfort Plus glass blocks out 99% of the sun's UV rays. Think of it as sun-block for your sofa, curtains and carpets.



**Reduce Overheating**

Perfect balance of light and warmth.

Rooms with lots of glass will give you a great view, but the warmth from natural daylight can make it uncomfortably hot on sunny days. Our Comfort Plus glass has a special coating designed to keep out heat from the sun's rays, for a comfortable and bright environment and greater control of your internal temperature. It's particularly suited for south- and west-facing rooms with sunny aspects, or larger glazed areas such as bi-fold and patio doors.

\*Secured by Design standards through our supplier Emplas, for accredited products please see: <https://www.securedbydesign.com/member-companies/sbd-members> and search for Emplas Window Systems Ltd

# PVC-U PANEL FRONT AND BACK DOORS

Our PVC-U panel infill front and back doors provide a high security, low maintenance and robust option, that's fully geared up to survive every day family life!

They won't warp, or twist and require only the minimum of maintenance, while a high security multi-point locking mechanism and anti-bump, pick and drill cylinder locks mean that they meet and exceed PAS24, the Building Regulations Security standard.\*

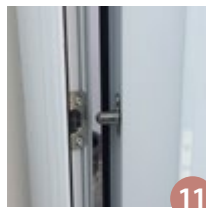
With a wide selection of decorative glass options, colour and finish choices, you can design your perfect door.

\* When selected

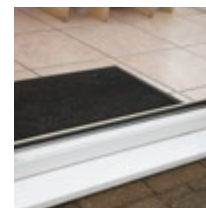


# PVC-U PANEL FRONT AND BACK DOORS – TECHNICAL OVERVIEW

Our PVC-U infill panel doors, like our composite front and back doors (see pages 42-43) employ cutting-edge innovation to keep your home warm, secure and weathertight.



LOW THRESHOLD



STANDARD PVC THRESHOLD



**Be sure it's secure**

All our PVC-U doors are Kubu equipped as standard, see page 48



- 1** Robust vacuum and pressure bonded panel, featuring reinforced core and 'type A' fire resistant and thermally efficient expanded polystyrene insulation
- 2** Choice of contemporary and traditional designs
- 3** Secure energy efficient door frame, featuring localised thickening of walls, providing increased screw through pull and hardware retention
- 4** Multi-point locking mechanism and high security keep
- 5** Anti-pick, anti-bump and anti-drill door locking cylinder. (if selected)
- 6** High performance gaskets provide superb weather sealing
- 7** Energy efficient decorative glazing options
- 8** Choice of standard PVC or low aluminium threshold options
- 9** Choice of colours and woodgrain finish options. See page 39
- 10** Meets and exceeds all current requirements under building regulations, when specified
- 11** Optional dog bolts an additional burglar deterrent



**MANOR**

The Manor is a flexible half-glazed door which has been designed to let the light flood into your home. Inverted mould detailing in the bottom panel give the Manor an understated elegance, making it suitable for use as either a front or back door. **Shown here with Stippolyte glass and optional mullion.**

We have created a specially selected range of PVC-U panel doors, designed to bring style and elegance to any home.

Combined with a wide choice of colour and decorative glazing options, finding the perfect new door for your property is easy.





#### BUCKINGHAM

The Buckingham is a highly flexible half-glazed door option. Bringing light into your home it can be installed as either a front or back door. It's defined by its subtle octagonal moulded detailing in the bottom panel. **Shown here with Everglade™ glass**



#### SANDRINGHAM

The classical front door, the Sandringham features an energy efficient solid design providing a high level of security and a half-moon door light, with Georgian Bar detailing. **Shown here with Florielle™ glass**



#### ARTEMIS

The Artemis is another classic door design. Suited to use as either a front or back door, it features two half leaded door lights, which allow light to flood into a hallway or kitchen. **Shown here with Charcoal Sticks™ glass**



#### MADRID

The Madrid brings classical styling to your home. Two large door lights with arched focal points bring light into your home making this beautifully styled front door a popular and flexible choice. **Shown here with Contora™ glass**



## PVC-U PANEL DOOR FINISH, GLASS & HARDWARE OPTIONS

Your door is the sum of its parts. We've taken care of the things that you would expect. Energy efficiency, security and weather tightness – but it's your choice of colour or woodgrain and hardware, which will give it those all-important finishing touches.

**See Page 38 for Hardware &  
Page 39 for Colour options**



# OBSCURE GLASS OPTIONS

## PRIVACY FOR YOUR HOME

Alongside colour, your choice of glass will shape the appearance of your door. Whether you choose a simple privacy glass or decorative glass finish, all of the glazing units we supply are internally beaded and feature A-Rated energy efficient glass.



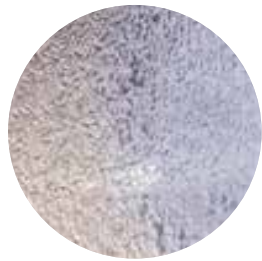
Everglade™



Pelerine™



Charcoal Sticks™



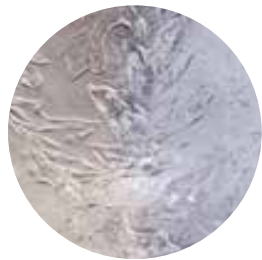
Contora™



Florielle™



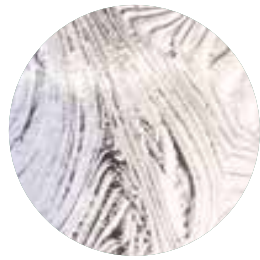
Mayflower™



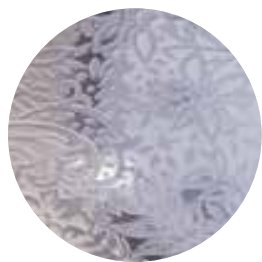
Oak™



Digital™



Taffeta™



Chantilly™



Minster™



Warwick™

Please note double glazed options, do not come as laminated / SBD as standard



Door featured with Everglade™

OBSCURE GLASS



Door featured with Contora™



Door featured with Charcoal Sticks™

# HANDLES, HARDWARE & DOOR FURNITURE

Your door handle is the part of your new door that you'll touch each and every day. Your letter plate, choice of knocker, all come together to put the all-important finishing touches to your new door.

Whether you're designing a contemporary, bold, statement door, or recreating the timeless charm of a period installation, we can offer you the perfect choice of lever, pad lever, heritage or contemporary pull handles available in white, gold, chrome black and satin finishes.



We also offer a Long Lever easier to grip Handle (3rd column above) which offers a greater, smooth action and low operating forces required to operate handle. The ample lever-to-door surface clearance option, are Compliant with Document M of the The Disability Discrimination Act (DDA), which states that the door handle needs to be able to be operated one handed without tightly grasping or any twist on the wrist.

Stainless steel options are available, for ultimate corrosion resistance which come with a 10 year guarantee. These are shown in the 1st column above. Standard Black and White Zinc / Aluminium hardware is also covered with a 10 year guarantee.

Appearance and finish on hardware is subject to change. Also please take into account that the product photography may slightly differ from the physical item in terms of color, due to lighting during photo shoot and the print reproduction process.

\*Supplied through our supplier Emplas, for accredited products please see: <https://www.securedbydesign.com/member-companies/sbd-members> and search for Emplas Window Systems Ltd



# COLOUR OPTIONS

Colour is a powerful design tool.

It can make your PVC-U windows and doors seamlessly blend into the materials that surround them, delivering a subtle finish, which suggests that they have always been there.

It can drive bold statement designs which exude contemporary sophistication.

Or colour can sit anywhere in between – the choice is yours.

Our extensive colour and finish range from traditional woodgrain options, to contemporary greys and subtle creams and whites brings incredible design flexibility to low maintenance and energy efficient PVC-U windows and doors.



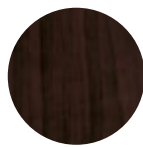
White / White  
(White Base)



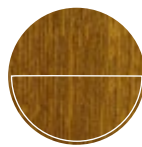
Cream / Cream  
(Natural Base)



Rosewood / Rosewood  
(Brown Base)



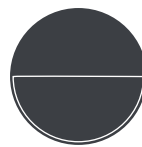
Rosewood / White PVC-U  
(White Base)



Light Oak / Light Oak  
(Tan Base)



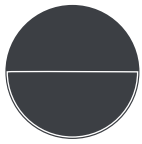
Light Oak / White PVC-U  
(White Base)



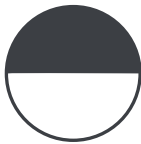
Anthracite Grey / Anthracite Grey  
RAL 7016  
(Grey Base)



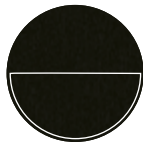
Anthracite Grey / White PVC-U  
(White Base)



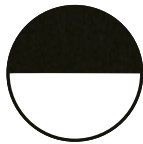
Anthracite Grey Smooth / Anthracite Grey Smooth  
(Grey Base)



Anthracite Grey Smooth / White PVC-U  
(White Base)



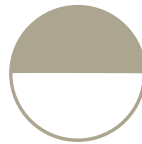
Black Brown / Black Brown  
(Brown Base)



Black Brown / White PVC-U  
(White Base)



Pebble Grey / White  
(White Base)



Sage Smooth / White  
(White Base)



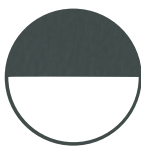
Claystone / White  
(White Base)



Chartwell Green / White  
BS14C35  
(White Base)



Agate Grey / White  
RAL 7038  
(White Base)



Slate Grey / White  
RAL 7015  
(White Base)

## COLOUR CODES/ COLOUR MATCH

The colour match data is given in good faith.

Please note that RAL colour codes are the nearest match only and, therefore, not exact matches with the foil.

## NOT ALL DOORS ARE MADE EQUAL

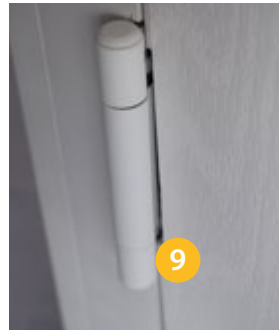
Our composite doors combine the latest innovations, to keep your home warm and secure, whatever the weather.

Emulating the natural beauty of wood with an energy efficient warm core technology and high security multi-point locking system, our composite doors are an elegant addition to any home.



# COMPOSITE DOOR

Composite front and back doors emulate the natural warmth of timber but without the maintenance. Secure, thermally efficient and available in a wide variety of traditional and contemporary designs, they're a stunning addition to any home.



- 1 HIGHEST SECURITY LOCKING**  
Our doors are manufactured to the highest security standards, featuring multi-point locking mechanisms, keeps and handles as standard. They're anti-lift, anti-drill and anti-pick, meeting and exceeding all current building standards including PAS24 (when laminated glass and security letterplate is incorporated).
- 2 INSULATED THERMALLY EFFICIENT CORE**  
Our doors are manufactured from a thermally efficient and tough high density polyurethane foam core. They're tested to be almost 20 per cent better at keeping the warmth inside your home and your energy costs lower, than a traditional solid timber door
- 3 SOUND INSULATION**  
The polyurethane core offers great sound insulation, reducing outdoor noise by an average of 31dB

- 4 COLOUR CHOICE**  
Choose from 9 through-colour standard finishes or a choice of 37 Premium colour options, making the colour choice for your home as individual as you are
- 5 DOOR FURNITURE**  
Define your style with a choice of handles, letter-plates, door knockers and spy holes available in satin, white, gold, chrome and black finishes (see page 38)
- 6 MOBILITY**  
All of our doors come with an optional mobility low threshold, ideal for wheelchair use or with pushchairs. This option complies with Document M of the Building Regulations (when ramps are selected)
- 7 NATURAL TIMBER**  
The appearance of natural timber but without the maintenance. Composite doors emulate the natural appearance of a traditional timber door but without the associated maintenance. They won't warp or expand and don't require painting

- 8 ENERGY EFFICIENT GLAZING**  
Our doors feature the latest in energy efficient double and triple-glazed glass technology to keep your home warmer.
- 9 HINGES**  
Manufactured from stainless steel, unlike lesser doors, our hinges come with a full 10-year guarantee and minimalist aesthetic design lines
- 10 WEATHERTIGHT**  
The insulated core is protected from water and moisture ingress by a high performance polymer skin. Our doors are also fully tested to all relevant Standards
- 11 KUBU EQUIPPED DOORS**  
You'll be able to check the status of your door no matter where you are, at any time of the day, right from the Kubu app on your phone. With Kubu say goodbye to uncertainty and hello to peace-of-mind.



Door style is Carnoustie in Chartwell Green featuring Lanesborough Green glass

**CARNOUSTIE, BIRKDALE & PENINA\***

Our most popular composite door option which is now available in a choice of three glazing styles.



Carnoustie



Birkdale Option



Penina Option

Our composite doors come in a wide choice of elegant designs and colour finishes, which means you can always find the perfect match for your home.

These are some of our favourite designs but if you can't see what you're looking for, please request a copy of our dedicated composite door brochure, The Classic Door Collection.

\* Lanesborough glass is not available in Birkdale & Penina options





Lytham Gridlite option

Style: **Lytham**  
 Colour: **Red**  
 Glass: **Athena**  
 Hardware: **White lever pad**

**LYTHAM**

The large glazed area lets light flood through which can be enhanced with the Gridlite option.



Style: **Belfry**  
 Colour: **Anthracite**  
 Glass: **Grange**  
 Hardware: **Chrome**

**BELFRY**

Unlike other 'cottage' doors in the market, the Belfry has a unique 'offset etched' detailing and comes in two glazing styles.



Style: **Riviera**  
 Colour: **Clotted Cream**  
 Glass: **Artemis**  
 Hardware: **Black lever pad**

**RIVIERA**

A traditional favourite with just a hint of modern.



Style: **Troon**  
 Colour: **Black**  
 Glass: **Impression**  
 Hardware: **Chrome**

**TROON**

A traditional six panel design gives the Classical interest and detail.



Door style is Monza II Augusta long in Anthracite Grey featuring Luxor glass and 720mm pull bar



# GLASS OPTIONS

## CHOOSE THE PERFECT DESIGN FOR YOUR HOME

The decorative touch that defines your door, our wide range of glass options offer you the perfect choice.

Whatever your preference, all of our doors are internally glazed, while glass units achieve top ratings for energy efficiency, keeping your home safe, warm and welcoming.



Lanesborough



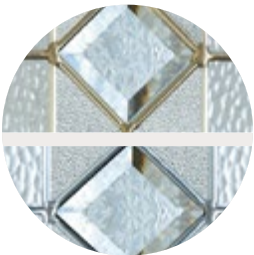
Impression\*\*\*



Grange



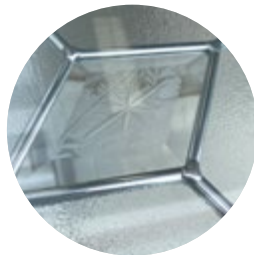
Luxor\*



Tranquility\*\*



Panama



Prestige\*\*



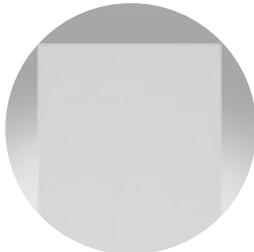
Artisan\*



Diamonte\*\*



Athena



Artemis



Optimal



Birchwood\*\*\*



Synergy\*\*\*

# OBSCURE GLASS OPTIONS

## PRIVACY FOR YOUR HOME

A choice of designs, our range of etched glass adds a touch of style, elegance and privacy to your home.



Satin



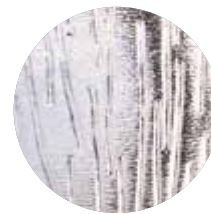
Cotswold™



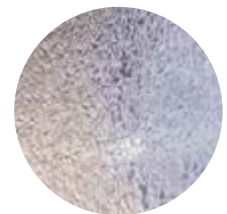
Stippolyte™



Minster™



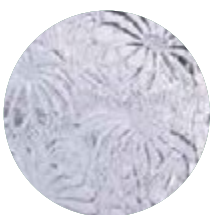
Black Grey Sticks™



Contora™



Florielle™



Mayflower™



Oak™



Digital™



Chantilly™



Pelerine™

\* Clear Bevels \*\* Textured Bevels \*\*\* Mixture of Clear and Textured Bevels. Door styles are also available with fully clear or obscure double glazed options, as shown above. Please note double glazed options, do not come as laminated / SBD as standard unless specified.

# DOOR COLOUR OPTIONS

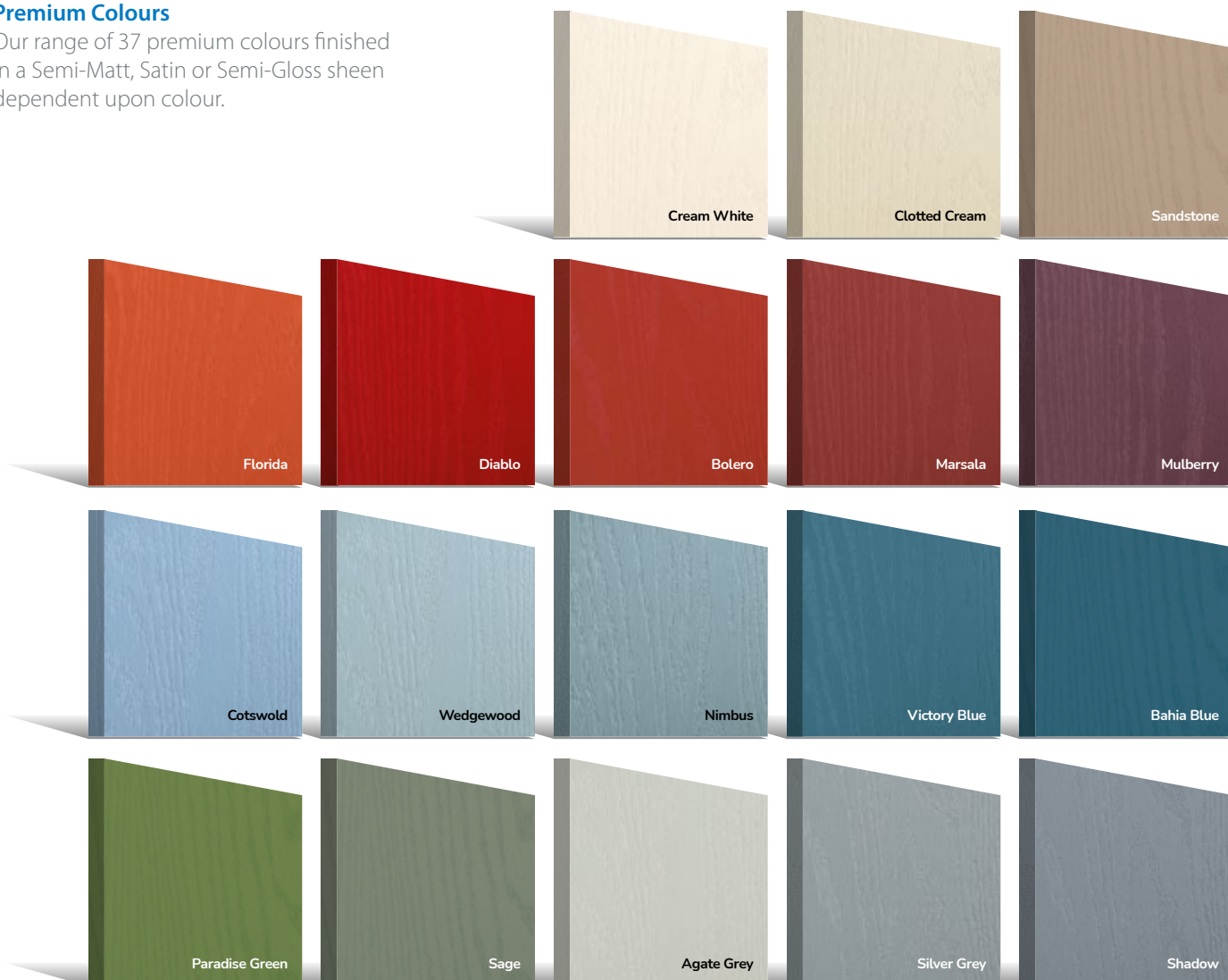
## Standard Colours

We offer a range of 9 external colours with a white interior as standard. Coloured both sides available as a cost option.



## Premium Colours

Our range of 37 premium colours finished in a Semi-Matt, Satin or Semi-Gloss sheen dependent upon colour.

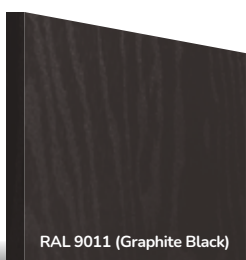




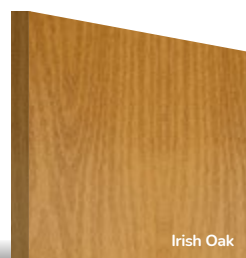
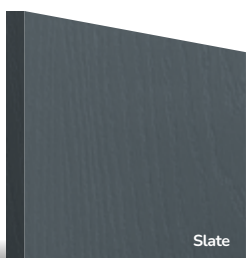
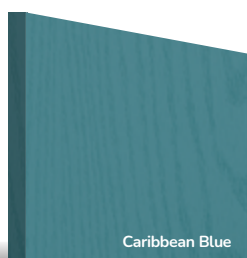
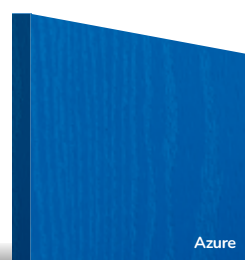
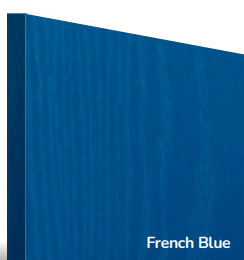
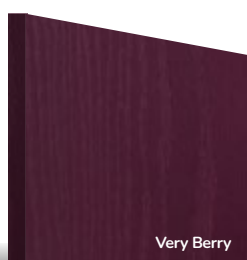
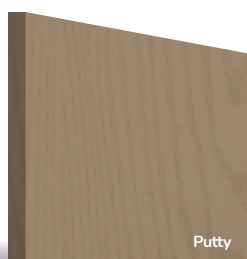
# COMPOSITE DOOR COLOUR OPTIONS

## RAL Colours

Any RAL colour is available from us as a special order. Here are the most requested colours as an example.



\* Please note that due to the physical differences of a PVC-U outerframe and the GRP skin of the door, we cannot guarantee an exact colour match of door and outerframe.



Door colours shown in this brochure should be used for guidance only. We have made every effort to match the colour and stain you see in the brochure so it's as close as possible to our paint when applied to the doors. Due to the nature of the product it is applied to, there is sometimes a difference between them which we cannot avoid. The colour, intensity and sheen level may differ from the paper print version and we do not accept any liability for this for whatever reason.

\* Some RAL colours containing luminous elements are unavailable

# KUBU EQUIPPED DOORS



How many times have you thought...have I locked my door? We've all been there!

**With Kubu you'll never have to worry if your door is unlocked again.**

Kubu uses smart and simple technology to monitor your lock in real time. You'll be able to check the status of your door no matter where you are, at any time of the day, right from the Kubu app on your phone.

With Kubu say goodbye to uncertainty and hello to peace-of-mind.

**Be sure it's secure**

**What does the Kubu App do?**

- It lets you see the status of your door (locked/unlocked).
- Get notifications with every turn of the key.
- You can schedule notifications when you want.
- It shows the history of your doors.
- You can share your door with family and friends.
- Its perimeter feature helps to prevent you from leaving your home unlocked.

**Kubu Equipped Doors**

To activate your Kubu Equipped Door Lock and make it smart, you will need to purchase your Kubu Smart Kit from [www.kubu-home.com](http://www.kubu-home.com)

Once your Kubu Home Hub arrives

- 1 Simply follow the QuickStart guide that comes with the Kubu Smart Kit in order to get set up.
- 2 During set up you will be prompted to enter a door reference code, this is on the dummy module that is within the Kubu lock smart activation slot.

**Be sure it's secure**

- From any place in the world.
- At anytime, day or night.
- On all the doors in your home.
- On all the homes that you look after.

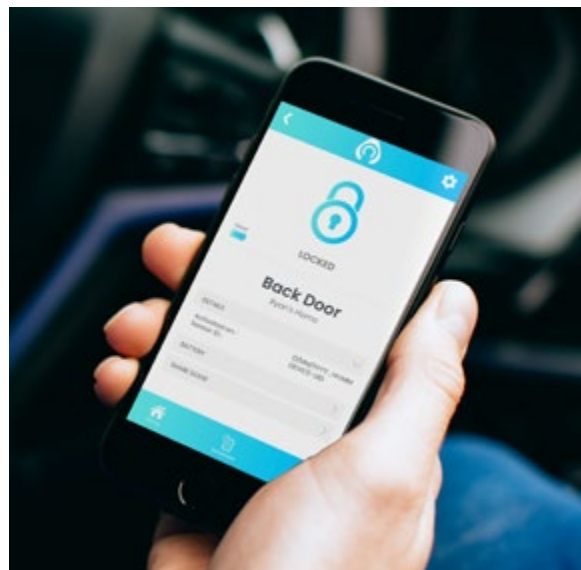
\* Please note: Kubu Smart Technology is not available on slam shut doors.



Download the app

Kubu Home Hub

Door Module







Your composite door will include Smart technology, as standard.





# SLIDING PATIO DOORS, FRENCH DOORS AND BI-FOLDING DOORS

Inline Sliding patio doors, French doors and Bi-folding doors are about summer and much more. From relaxing on a warm evening with a glass of wine with friends and family to watching the autumn leaves fall and the seasons change, each opens a window to the world outside.

Whether you decide on a slim sightline and space saving patio door, classic and timeless French Doors, or contemporary Bi-folding doors, your choice will make a perfect connection between your home and garden.



# SLIDING PATIO DOORS

Capable of spanning wider distance, sliding-doors leave the view from your property almost uninterrupted and create a great year-round connection between indoor and outdoor spaces.

Manufactured in thermally efficient and low maintenance PVC-U profiles and featuring high security multi-point locking mechanisms, we supply the market leading PatioMaster Sliding Patio Door. Luxurious soft open and close technology, contemporary finishes and slim sightlines mean that our inline sliding door range provides a seamless connection from your home to garden.



PAS 24 Security Keep Rail Jamb & Keep Rail Head



- 1** Slim sightline multi-chamber energy efficient framing system
- 2** Smooth glide lightweight opening and closing mechanism tested to 150,000 cycles
- 3** White, wood-grain and colour options (see page 39)
- 4** High performance energy efficient A-Rated 28mm glazing as standard
- 5** Two three or four pane options
- 6** Steel reinforcement
- 7** Six point locking system with anti-jacking technology for outstanding security as standard
- 8** Anti-lift brackets fitted as standard to all sliding sashes
- 9** Featuring anti-bump cylinders if SBD is selected
- 10** Low track low threshold options for ease of access (internal use only)
- 11** Weather seals prevent draughts and leaks
- 12** Secured by Design Option available (in two pane option) through our supplier Emplas, for accredited products please see:





# SLIDING UPVC PATIO DOOR OPTIONS

Our Sliding Patio Doors offer incredible design flexibility, so finding a combination that's right for your individual home is simple.

- 1 Decide on a door combination, choosing either from two, three or four pane options
- 2 Take your pick from our range of colours (see page 39) and handles

## GLASS

All of our sliding doors come with A Rated energy efficient glass which is toughened for your families safety.

## HANDLES

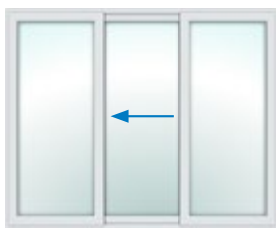
Our high security handles are manufactured from robust materials to an attack resistant design. Available in White, Chrome, Gold, Satin and Black, they feature a special scratch resistant finish and are guaranteed for 10-years.



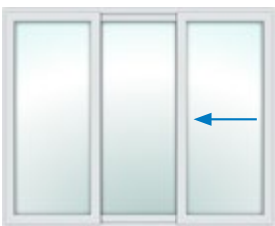
2 PANE OPTION



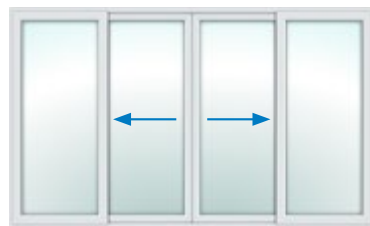
3 PANE OPTIONS



3 PANE OPTIONS



4 PANE OPTION



## CLASSICALLY DETAILED, TRADITIONAL DESIGNS

French doors create a timeless and classic connection between your home and garden. Low maintenance and energy efficient, our Sculptured and Chamfered PVC French Door framing systems, emulate the traditional detailing of timber doors.

This traditional design is combined with multi-point locking and profile reinforcement, to deliver the highest standards in entrance door security. A choice of colours and finish, complementing its classic appeal.

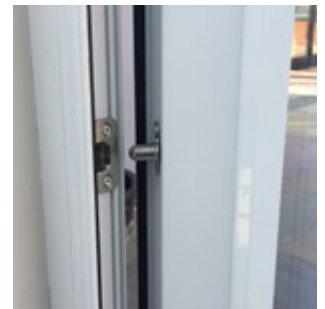


# FRENCH DOORS



Be sure it's secure

All our PVC-U doors are Kubu equipped as standard, see page 48



- 1** 70mm slim sightline frame featuring sculptured and chamfered options plus extensive choice of colour and finish options (see page 39)
- 2** Thermally efficient outer frame featuring six 'honeycomb' chambers and five chamber sash
- 3** Energy efficient recycled composite material or full steel reinforcement options
- 4** Deeper drainage channels carry water away quickly improving weather performance
- 5** 8mm cover on weather seals and optional dog bolt security upgrade available on hinge side of door
- 6** Specially designed hardware fixing points and local thickening of frame walls to improve screw retention and improved security
- 7** High security internal glazing system
- 8** Energy efficient double glazed options featuring warm-edge spacers and low-e coatings.
- 9** High security multi-point locking system providing the ultimate burglar deterrent
- 10** Meets and exceeds all current building standards including PAS24 (when 3\* cylinder and laminated glass is selected)

Choose the perfect frame detail to match your new or existing windows and doors.



**SCULPTURED DETAIL**

Sculptured detailing offers a more traditional decorative finish replicating the curves found on traditional timber windows.



**CHAMFERED DETAIL**

Chamfered detailing features a more contemporary and simpler beveled edge, with straight sightlines.

Our carefully curated range of aluminium windows and doors has been selected to make it easy for you to find the perfect new window and doors for your home.

With slim sightlines, a choice of contemporary statement or classic designs and colour finishes, our aluminium window and doors are designed to combine exceptional performance with stunning aesthetics.

Manufactured in the UK in the leading and proven AluK system, we can offer you access to a wide range of ultra-secure and high-performing aluminium windows and doors.











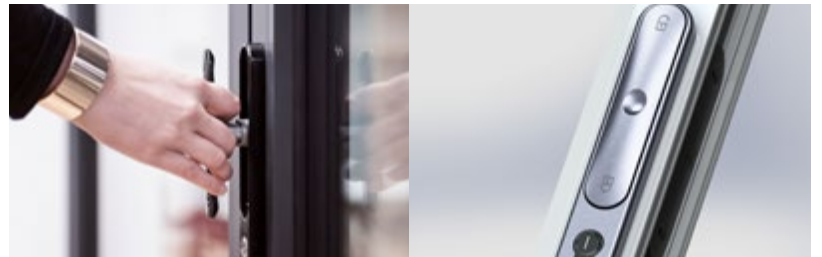
# THE ULTIMATE WAY TO HARMONISE YOUR HOME AND GARDEN

Our AluK Optio BSF70 and F82 Luminia bi-fold door have both been designed with style and performance front of mind. It cleverly combines the intimacy of inside spaces with the freedom of outside living, without ever compromising on performance safety or security.



## ALUK BSF70

- Heavy-duty bottom running system and track with four wheels per carriage. This guarantees smooth and reliable running, while accommodating individual leaf weights of up to 100kg
- Flexible configurations, styles and designs
- Internally beaded with softline/chamfered or square detail to all external doors and panels
- Glazing 28mm
- Four heavy duty stainless steel bogies per leaf guarantee smooth operation
- Unique, flush-line pop-out handle maximises door opening and square stacking of panels
- 34mm low threshold and 22mm room divider track available



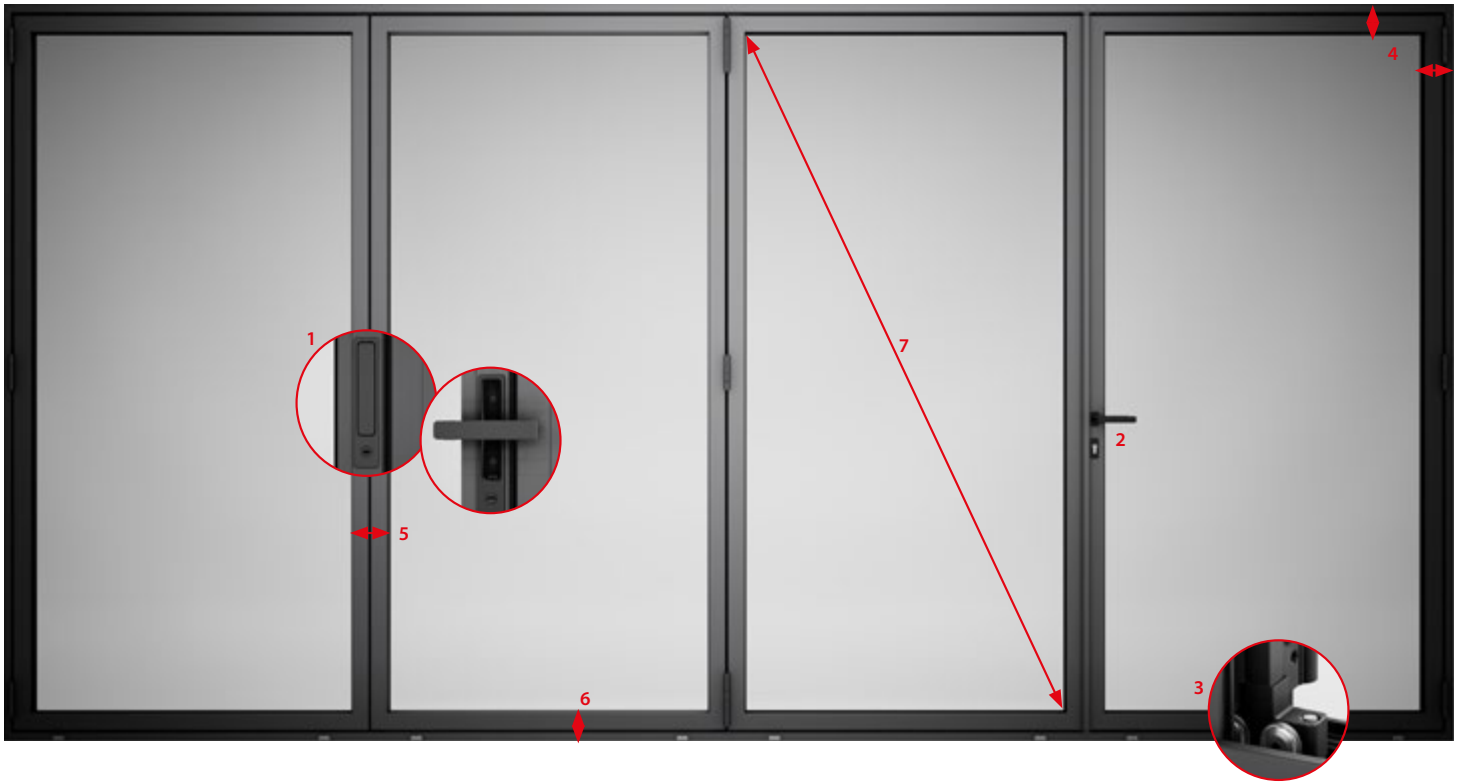
BSF70 HANDLE, SHOWN IN BLACK AND SILVER



## ALUK F82

- Class leading thermal performance with U-Values of 1.4W/m<sup>2</sup>K with a double-glazed unit and as low as 0.9W/m<sup>2</sup>K when triple glazed
- Accommodating larger spans and individual leaf width of up to 1200mm also maximises the glazed area of the door
- Slim, symmetrical sightlines on the frame, cill and jamb of only 97mm and only 122mm on the door meeting also add to end-user appeal
- Patented™ handle sits completely flush with the frame, using the simple push out system to operate
- Flush traffic door handle, in addition to the minimalist design of hinges
- Heavy duty rollers deliver effortlessly smooth operation and individual sash weights of up to 150kg





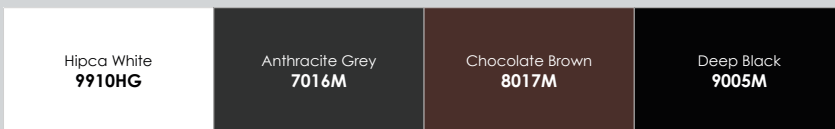
**DESIGN FEATURES**

- 1. Unique flush pop-out handle (F82) for ease of operation, removing the need for additional unsightly handles
- 2. Unique traffic door handle
- 3. Heavy duty compact rollers as standard
- 4. Both frame and cill sightlines of 97mm
- 5. 122mm Slimline interlock
- 6. Low threshold
- 7. Larger glazing area

## STANDARD COLOUR OPTIONS

Our standard colour ranges include a choice of white, anthracite grey, chocolate brown and deep black, plus dual colour anthracite grey-on-white and deep black-on-white.

**STANDARD COLOURS**



**DUAL COLOURS**



## SPECIAL COLOURS

We can also offer you access to a range of textured finish options and supply any RAL colour on special order, giving you the flexibility to pick out the perfect shade to compliment the individual character of your property.





## THE ALUK OPTIO BSC94 INLINE SLIDING PATIO DOOR

With a contemporary architectural aesthetic and maximum glazed area, aluminium inline sliding doors are a highly popular choice for home improvement projects.

The AluK BSC94 delivers maximum design flexibility with individual panel heights of up to 3000mm and maximum weights per panel of 400kg, allowing you to bring more light into your home.

An ultra-slimline option takes minimalist sightlines a step further, with a 45mm interlock/door meet giving you uninterrupted year-round views to your outside space.

\*imagery for illustrative purposes only





## FEATURES AND BENEFITS

- Year-round connection between your home and garden
- Maximum glazed area and minimum interruption of views bringing more light into your home
- Can be supplied in an individual panel height of up to 3000mm and 400kg in weight, giving you the scale to tackle even the largest of projects
- Space-saving slide and lift-and-slide opening
- Slim 45mm interlock/door meet option – minimise disruption to your view
- Uses the latest polyamide thermal breaking technology to deliver an enhanced level of thermal performance
- 10-year manufacturer's guarantee





# ENTRANCE AND FRENCH DOORS

## THE ALUK OPTIO 58BD ENTRANCE DOOR

The 58BD Entrance door combines minimalist sightlines and a cool architectural aesthetic. It's also highly versatile, making the 58BD Entrance perfect for installation as a statement front or back door. Multi-point locking mechanisms, also deliver reassurance that your new door is designed to stand-up to would-be intruders, helping to keep your home safe and secure. The 58BBD Entrance door is available in a choice of glazed or solid panel options.

\*imagery for illustrative purposes only



58BD Entrance





## THE ALUK 58BD FLUSH ENTRANCE DOOR

The Optio 58BD Flush Entrance Door offers a minimalist and contemporary aesthetic. It delivers exactly the same high performance and enhanced security as our standard door but with a modern twist, so that the opening door sash finishes flush with the outer frame, also offering a match into our flush window range (see pages 66-67)

## THE ALUK 58BD FRENCH DOOR AND FLUSH FRENCH DOOR

We offer the same design flexibility across our French door offer with a choice of standard or flush finish options. Versatile and defined by an understated elegance, French doors are a timeless and highly practical option for your home.

### FEATURES AND BENEFITS

- Choice of standard or flush finish
- High performance multi-point locking keeps unwanted visitors out
- Uses the latest polyamide thermal breaking technology to deliver an enhanced level of thermal performance
- 10-year manufacturer's guarantee



58BD Flush Entrance



## THE ALUK OPTIO 58BW ST

Originally designed as a replacement for period steel-type windows, the AluK Optio 58BW ST offers an ultra-slim 46mm sash, creating a minimal sightline.

Despite its origin as a heritage replacement, this minimalist offer can also be designed to create a contemporary aesthetic, while maximising the glazed area, it allows you to bring more light into your home.



### Flat

A cleaner and contemporary design, creating a minimalist contemporary appearance



### Chamfered

A simple design with an angled fall away from the glass line



### Heritage

A more ornate design replicating period steel window installations





### FEATURES AND BENEFITS

- Minimal sightlines with a 46mm sash
- Can be used as a steel window replacement or contemporary installation
- Advanced thermal performance using the latest polyamide thermal breaking technology to deliver an enhanced level of energy efficiency with an 'A' Window Energy Rating and u-values as low as 1.5W/m2\*
- Severe weather tested
- 10-year manufacturer's guarantee

\*Dependent on glass combination





## THE ALUK OPTIO 58BW FLUSH

We've also added AluK's Flush variant of the 58BW ST to our range. In common with the ST it has an ultra-slim 46mm sash, which combined with a flush finish, has been developed to create a clean and contemporary appearance.

It can also be combined with different colour options to create a more subtle and understated finish.

Like the rest of our window and door range, it features multi-point locking and cutting edge thermal breaking technologies.

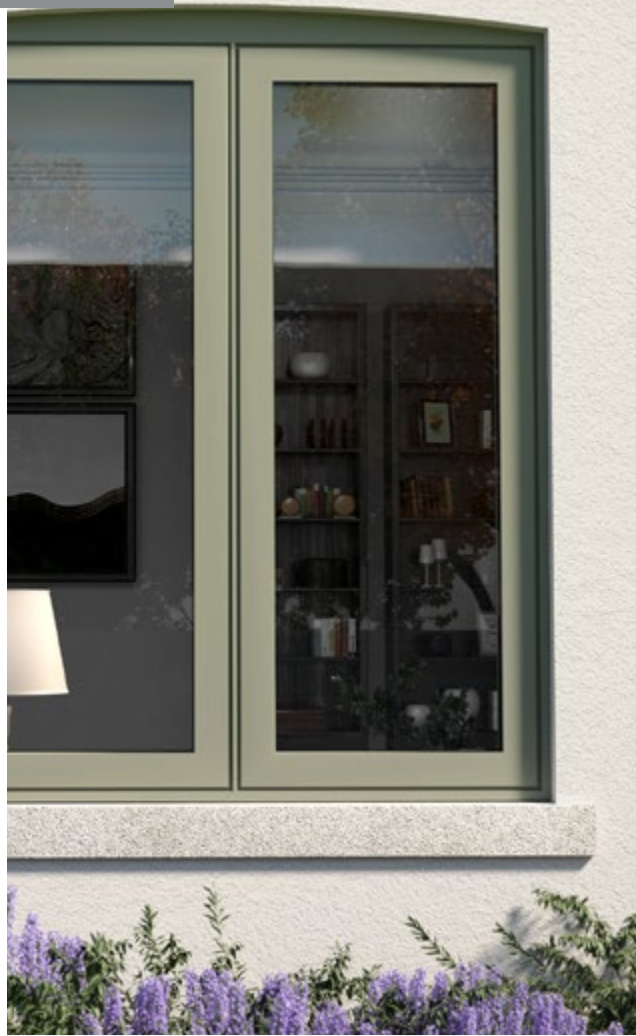
\*imagery for illustrative purposes only





#### FEATURES AND BENEFITS

- Sash and outer frame align flush against each other to create a clean and contemporary finish
- Advanced thermal performance using the latest polyamide thermal breaking technology to deliver an enhanced level of energy efficiency with an 'A' Window Energy Rating and u-values as low as 1.5W/m2\*
- Severe weather tested
- 10-year manufacturer's guarantee





## THE ALUK OPTIO 58BW TILT-BEFORE-TURN

Sophistication meets practicality in the Optio 58BW Tilt-Before-Turn window.

Sharing the same minimalistic sightlines of our Optio window range, our Tilt-Before-Turn window provides safe and secure ventilation, pivoting from the bottom of the window, to let fresh air into your room from the top, making it an ideal choice for families with young children.

The mechanism also allows the window to be opened into the room to increase airflow and making cleaning easy!





## FEATURES AND BENEFITS

- Pivots from the bottom of the window to provide safe and secure ventilation. Ideal for families with young children
- Also opens into the room to provide increased ventilation and for ease of cleaning
- Minimal sightlines
- Advanced thermal performance using the latest polyamide thermal breaking technology to deliver an enhanced level of energy efficiency with an 'A' Window Energy Rating and u-values as low as 1.3W/m<sup>2</sup>\*
- Severe weather tested
- 10-year manufacturer's guarantee

\* Dependent on glass combination





# SECURITY

## PEACE OF MIND, BUILT IN

With one home in England and Wales broken into every seven seconds – the majority by forcing or kicking a door – your doors and windows are in the ‘frontline’ in the battle to protect your home from intruders.

All of our doors and windows are designed to give you and your home the highest levels of protection, featuring multi-point locking and reinforced frames.

We can also supply doors and windows to the Secured by Design Police Preferred Specification through our supplier Emplas, for accredited products please see:

<https://www.securedbydesign.com/member-companies/sbd-members> and search for Emplas Window Systems Ltd







### ACCREDITATIONS AND REGULATIONS

Our door and window ranges are manufactured to the highest standards in compliance with controls set out in British Standards ISO9001, which ensure a commitment to consistent product quality.

Meeting and far exceeding current UK Building Regulations, your new windows, doors or conservatory are future-proofed for years to come.

### OUR COMMITMENT TO THE LATEST REGULATIONS AND STANDARDS

- PAS24: enhanced security for doors\*
- Part M, (Access to and use of Buildings) compliance\*
- Part Q (Security: Dwellings) compliance
- Part L (Conservation of Fuel and Power), compliance
- ISO 9001, Quality Management System approved to ISO 9001
- Environmental Management Policy approved to ISO 14001
- Health and Safety management policy approved to ISO 45001
- CE Marking approval
- Secured by Design (SBD)\* through our supplier Emplas, for accredited products please see:

<https://www.securedbydesign.com/member-companies/sbd-members> and search for Emplas Window Systems Ltd

- U-Value reports independently provided by Profile 22 U-Comply

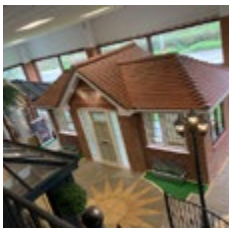
\*Optional specially selected product configurations only

# PEACE OF MIND BUILT IN



# Newglaze

WINDOWS | DOORS | CONSERVATORIES



**Blandford Showroom:**  
1 Sunrise Business Park  
Higher Shaftesbury Road  
Blandford Forum  
Dorset, DT11 8ST  
**Tel: 01258 483535**



**Poole Showroom:**  
Unit 2 Poole Trade Park  
Innovation Close  
Tower Park  
Poole | Dorset | BH12 4FG  
**Tel: 01202 744114**

Freephone: 0800 413129 | [www.newglaze.co.uk](http://www.newglaze.co.uk)